



“Effective action to benefit nature, people and the economy happens when the right people come together locally in partnership.”

North East England has a rich and varied environment incorporating coastal, rural and urban landscapes covered by a range of international, national and local designations. These high quality landscapes and the natural environments they support are intrinsically valuable; many are visually pleasing and create iconic views that are known across the world.

These landscapes also create a range of ‘ecosystem services’ providing social and economic benefits including; a reduction in flood risk, climate regulation, noise mitigation, crop pollination, carbon sequestration, reduced air and water pollution, improved health outcomes, enhanced wellbeing and greater social cohesion.

Our exceptional natural environment mustn’t be taken for granted, we all have a role in enhancing and connecting habitats, in giving value to natural assets and with a collaborative effort can achieve environmental growth across the region.



Environment



Economic growth



Personal wellbeing

Environmental Growth recognises the link between health, the economy and the environment. It involves investing in Nature, so that it is more connected, functions better and provides more.

Through this high level strategic document we want to create biodiversity gain and add value to ecosystem services.

- We will influence and take a lead in creating opportunities for partners to expand their ambitions, plans and approach to project delivery.
- We will encourage businesses, communities, landowners, health professionals and individuals to work together to support our vision of making...

‘The North East England the best place to be’

Despite good efforts overall there is a **decline in biodiversity** in North East England and the UK as a whole because of increases in population, development, economic pressures and climate change.

Biodiversity matters, because it is intrinsically valuable and is also an indicator of ecosystem health, the very ecosystems that are vital to our own health and wealth.

Quite appropriately for our region, species decline can be considered to be the ‘*canary in the coal mine*’ and should serve to focus our attention and efforts and in raising the needs of our environment in all agendas.

The NEENP is committed to the creation of sustainable communities and developments that offer high-quality environments with a strong sense of place.

We want to demonstrate that economic progress and habitat enhancement are complementary and when developed together create places where people want to live, work and invest.

Our personal health and health of our economy human society, depends on the continuous supply of various ecological services that would be extremely costly to replace.

CONVENTION ON BIOLOGICAL DIVERSITY, 2002

20 year Vision for Environmental Growth to achieve our mission of a 'A thriving natural environment providing for a healthier and wealthier North East England'



Increase our biodiversity resource by restoring the natural environment at a landscape scale to create a resilient and coherent ecological network in the North East

WE WILL:

- Complete a suite of **Landscape Action Plans** that will identify opportunities for investment in biodiversity and ecological connectivity and resilience to climate change.
- Ensure enhanced green and blue infrastructure planning across North East England encouraging the use of GIS, SMART and 5G technologies.
- Work **strategically** to create a landscape scale project pipeline and support partners in development and delivery.
- Support landowners and farmers to adopt and implement wildlife friendly management methods on some or all of their holdings.



Achieve economic growth that is environmentally sustainable and intergenerationally fair by demonstrating the value of the natural environment as an employer, wealth creator and an attraction to investors.

WE WILL:

- Actively **engage** local organisations to contribute to environmental growth and to reduce their resource use and the impact of business activities on the environment.
- Farming
- **Sustainably develop** the region's economic strength of natural assets - wood, water and the landscapes that attract tourism.
- Become one of the first regions to adopt **Natural Capital** accounting to support regional strategies, growth and risk scenarios.



For every child in North East England to maximise their creativity, academic performance and healthy development with access to outdoor learning throughout their school life

WE WILL:

- Support educators with evidence and means to **identify** local need and opportunities for all children and young people to experience naturalised play and learning.
- Provide support to schools to enable opportunities and mechanisms to be put in place for children to **access** more nature based outdoor learning.
- Work with local businesses to innovatively help towards **costs** of providing outdoor learning days for children and young people.



For communities to have regular access and exposure to biodiverse landscapes to enhance health and wellbeing, give children the best start in life and reduce the costs of long term conditions and social care.

WE WILL:

- Make the case for the population wide benefits derived from making space for **nature across the life course** to create happy, healthy and connected communities.
- Work collaboratively to ensure everyone has **access** to a good quality natural environment to support healthy choices by encouraging greater movement, exercise and social cohesion.
- Support the expansion of nature based **social prescribing** across North East England to help health professionals, individuals and communities prevent and proactively manage ill health.

Operational expectations

Details of the expectations below can be found in the NEENP action plan available online www.neenp.org.uk

Communications

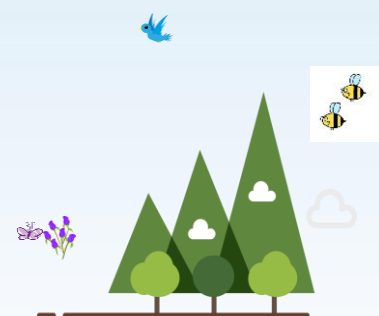
- NEENP the collective voice for the environment sector
- Create and deliver an internal and external communications plan
- Develop an annual lecture series

Achieving delivery

- NEENP Action Plan
- Landscape Action Plans
- North East England Climate Change Plan

Measure progress over next 20 years

- Environmental Growth Indicators
- Annual review
- 10 year full review of NEENP Environmental Growth Vision
- Capability Foundation & Fund



neenp.org.uk
capabilityne.org.uk
www.iie.uk.com/regions/northeast/

To comment email:
cthompson@neenp.org.uk